

Unit 2: Tissues

Lesson 9 : *Connective Tissue*

Activity 1 (15'): *Overview of connective tissue*

Read the following text and in pairs answer the questions.

Adapted from <https://courses.lumenlearning.com/boundless-ap/chapter/connective-tissue/>

Connective tissue (CT) is a one of the four tissues. It is the most abundant tissue and widely distributed, but the amount of it can vary according to the organ.

It can be found around the body organs and between different tissues. In fact one of its function is to support other types of tissues and organs and fill the empty space between them.

Unlike epithelial tissue, the connective tissue is never in contact with the external environment. Furthermore, this type of tissue gives strength, protection and insulation to other body tissues.

Each type of connective tissue has a particular function, e.g the hematopoietic one produces blood.

It has three main components: ground substance, fibers and specialized cells.

Connective tissue is mainly divided into two types: *connective tissue proper* and *specialized connective tissue*.

The first one is subdivided according to cells, fibers and ground substance into two types: loose connective (e.g. adipose, areolar) and dense connective tissue.

The second group, the specialized one, includes : cartilage, blood and bone.

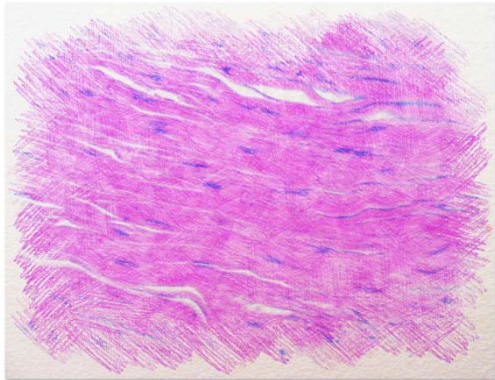


Fig. 1: dense connective tissue

Image modified from
"http://medcell.med.yale.edu/histology/connective_tissue_lab/dense_regular_connective_tissue.php"

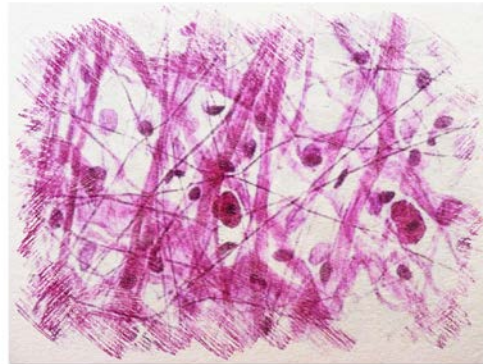


Fig.2: loose connective tissue

Image modified from "<https://histologyolm.stevegallik.org/node/99>"

1. What are the functions of the connective tissue?
2. In your opinion , why is the connective tissue defined loose or dense?
3. Based on your knowledge what is the specific function of each type of specialized connective tissue?

Activity 2 (35'): *Connective tissue proper*

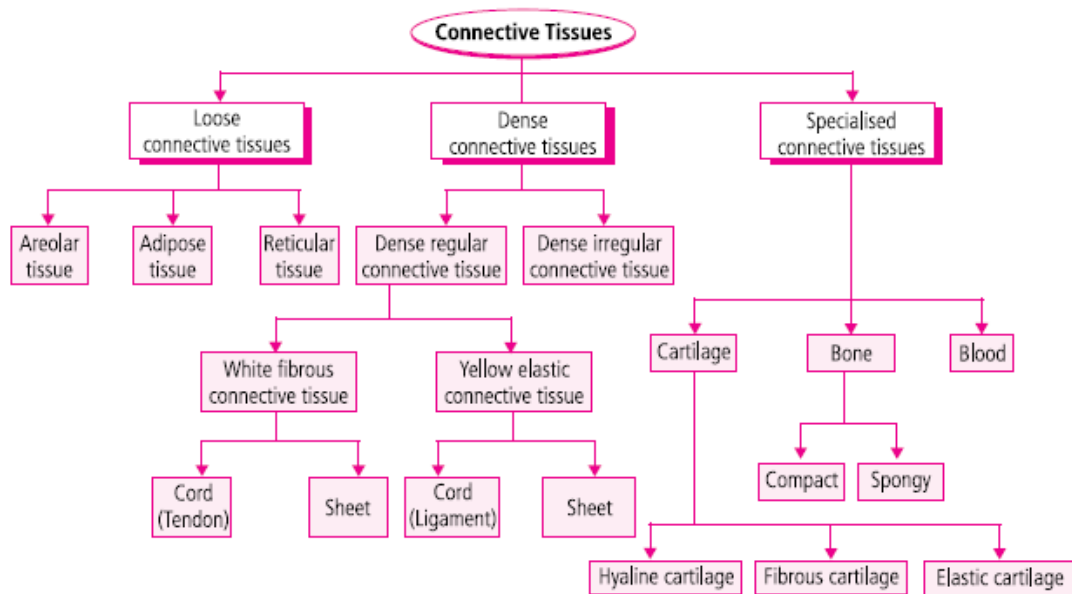
Step1(15'): After watching the following video twice

<https://www.youtube.com/watch?v=4HNbspnFyIE> up to 3.58 min complete the following table

Type	LOOSE	DENSE
Description		
Is it flexible?		
Is it strong?		
Common location		
Types		
Function		

Step 2 (20'): Watch the whole previous video, then in pairs, by referring to the video and the following concept map, write a text that summarizes the main contents of the connective tissue (max 15 lines).

Image taken by <https://www.hourlybook.com/types-loose-connective-tissue/>



Assessment

The written text will be assessed using the following grid.

Complete content = 50%

Scientific Language and spelling = 25%

Coherence and cohesion =10%

Grammar =15%

Percentage	Grade	Percentage	Grade	Percentage	Grade
100-95	9	94-85	8	84-76	7
75-65	6.5	64-58	6	57-50	5
49-35	4.5	34-0	4		